

CHANGING LIVES

The prison dog program was started by Sister Pauline Quinn in 1981 at the Washington Corrections Center for Women in Gig Harbor, WA. Prison dog programs are now in nearly every state in the U. S. and in many other countries.

With a staff primarily comprised of volunteers, Pathway's focus is on building and maintaining prison dog programs, saving shelter dogs from "death row," helping to rehabilitate inmates and assisting the disabled community.

In our society, the inmate is a throw away person because they did something bad. Likewise, an abandoned and unwanted dog is a "throw away animal" sometimes because it did something wrong. The inmates learn skills to teach the dogs to become 'good canine citizens.' In return, the dogs provide the inmates with unconditional love while they learn life and career skills.



Founder Sr. Pauline Quinn with Hearing Dog Nicki and Service Dog Reni.

PATHWAYS TO HOPE

Janette Thomas - Executive Director
janette@pathwaystohope.org
714-795-4165

Donna Shawver -Operations Director
donna@pathwaystohope.org
951-255-0302

We are dedicated to making a difference in the lives of those who need our help to make better choices by:

- Providing loving, forever homes for our program dogs
- Providing life and career skills for our program participants
- Providing Service Dogs for children with Autism Spectrum Disorder



Pathways to hope is a 501(c)3 public charity that relies on donations to continue its work.

Tax ID# **02-0536487**

PO Box 23148
Santa Ana, CA 92711-3148
www.pathwaystohope.org



Cell Dog Training Program



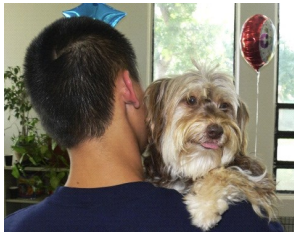
www.pathwaystohope.org



Orange County Probation
Department, Juvenile Hall
PAW (Pups and Wards)
Launched in July 2009

The participants in this program are male youth offenders between the ages of 16 to 18 years-old. The youth offenders learn to transfer their acquired training prowess to the dogs while learning a new set of "life skills" for themselves.

As part of this program, the wards visit at local county shelter where they are shocked to see hundreds of loving dogs that have lost their homes for one reason or another.



The empathy the youth experience during that "field trip" helps to empower them to take their training responsibility seriously, as they want to make sure the dog they train goes to a loving home, and not back to the shelter because of bad manners. The benefits of this program are far-reaching based on the impact the dogs have on the your participants and their adopters.

Since providing these programs for youth correctional facilities, where the recidivism rate for male offenders is ~ 55%, the rate for those who participated in our program ranges between 28-30%!!! That's definitely a metric we're proud of!



Orange County Sheriff's Dept.
COLLAR (Canines Offering Life Lessons And Rewards)
Launched: February 2013

This program is a collaborative effort with the Orange County Sheriff's Department, at the James A. Musick county jail facility located in Irvine.

We are extremely grateful to the support of the OC Sheriff's Dept. staff for their support as they have embraced this program with open arms and empowered the inmate trainers to be successful by designating their participation in this program as their full-time facility job!

Participating in this program is a coveted position by the inmates as they are grateful for the essential life and career skills they acquire while experiencing the unconditional love of their canine in training. The Security Staff is very impressed with the positive impact these programs have on the inmate trainers and the other inmates in the housing units.

This is in an 8-week training program with the goal of each dog passing the AKC Canine Good Citizen test prior to graduation.



California Institution for
Women
Autism Service Dog
Program
Launched: March 2012

Our goals for this program are lofty as our "canine candidates" are rescued from local shelters with the goal of becoming working partners for children afflicted with Autism Spectrum Disorder. Our selection criteria is very stringent and focuses on temperament as not all dogs are suited for "a life of service," regardless of their breeding heritage or social background.

This specialized program includes Basic Obedience, followed by an Advanced Training Program which teaches the dogs specific tasks to assist autistic children. Dogs must pass the AKC Canine Good Citizen test, and remain calm in difficult and stressful situations in order to help autistic children and their families. "Graduates" from the program belong to an elite group of service dogs!

